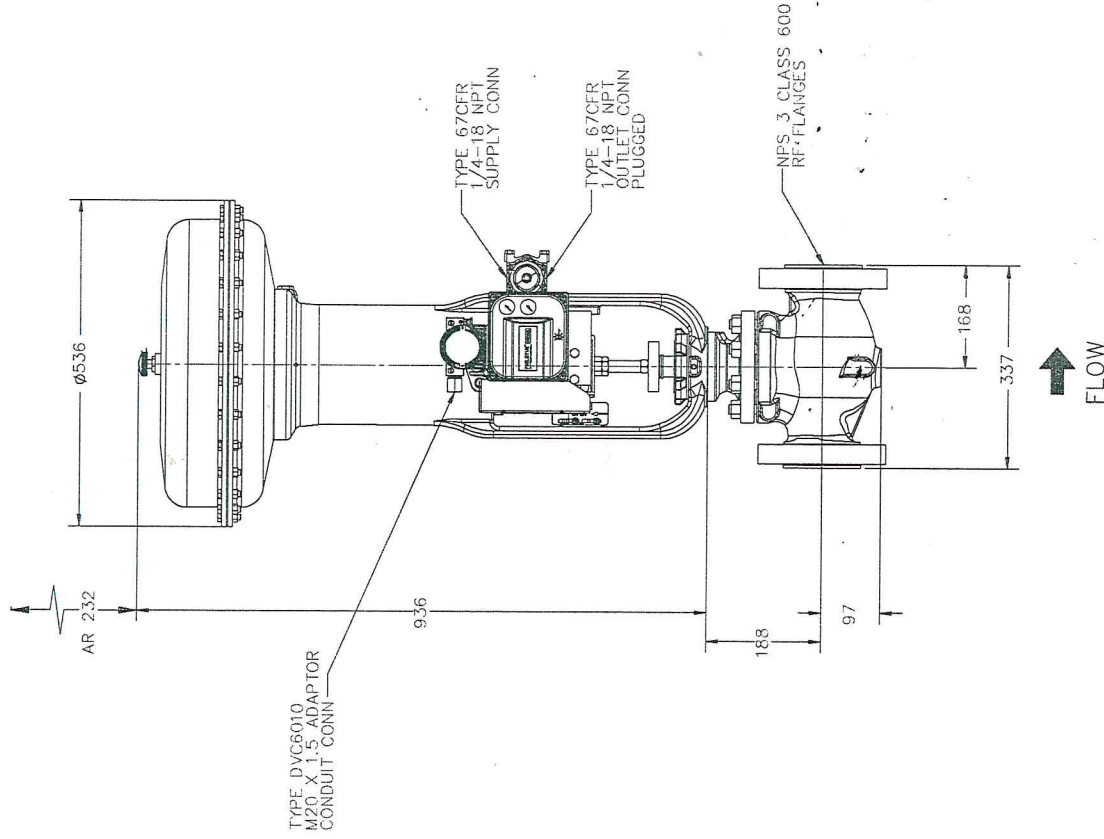


FEATURES PICTORIALY TYPICAL

ORIENTATION MAY DIFFER



VALVE BODY MATERIAL: WCC FMS20B101  
 BONNET BOLTING TORQUE: 157 NM  
 FACE TO FACE TOLERANCE IS  $\pm 2$  mm  
 TOTAL CALCULATED WEIGHT  $\pm 10\%$   
 BODY WEIGHT: 13 kg  
 ACTUATOR WEIGHT: 10 kg  
 TOTAL WEIGHT: 168 kg  
 CG = CALCULATED CENTER OF GRAVITY =  $\pm 10\%$   
 AR = ACTUATOR REMOVAL CLEARANCE  
 UNLESS OTHERWISE SPECIFIED  
 UNIT OF MEASURE: MILLIMETER.

FISHER		DATE 03.09.2012	
DIMENSIONS CERTIFIED CORRECT BY FISHER CONTROLS		ED VALVE BODY SIZE 3 667 ACTUATOR SIZE 70	
CUST: ASKALON AB		GENERAL ARRANGEMENT	
CUST REF NO.: 153782		DATE	2/20/2012
FISHER REF NO.: 326A153782		CHKD.	ZSC 03/09/2012
TAG NO.: 2FV0401		APPROV.	JVE 03/09/2012
SERIAL NO.: F000133303		SCALE	NONE
CUST LINE NO.: 000400		REV	A
REVISIONS - CHANGES REJECTED E/C		REP. LINE NO.	000400
© Fisher Controls Int. LLC 2012		DWG. NO.	AAB18396
EMERSON		SHEET 1 OF 2	